

# Campaspe River Basin

## Unregulated and Groundwater Diversions 2023/24

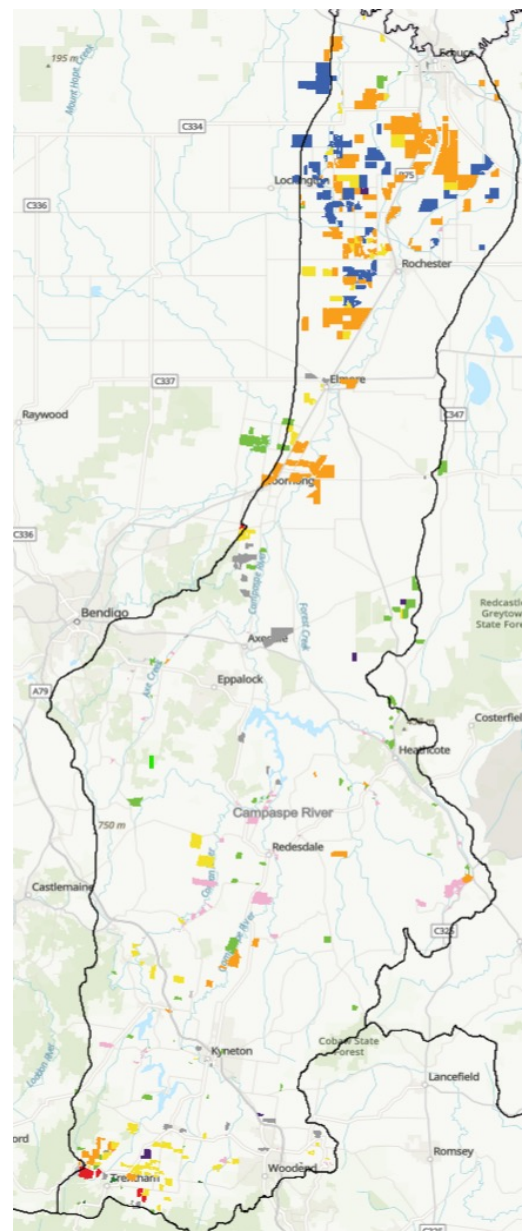
The Campaspe River basin spans from Woodend in the south to the Murray River at Echuca in the north, spanning 150 km. The catchment is approximately 417,914 ha. The main tributaries are the Campaspe River and the Coliban River, which starts near Trentham and meets the Campaspe River at Lake Eppalock. There are four main storages; Upper Coliban, Lauriston, Malmsbury and Lake Eppalock.

Throughout the catchment, there are landowners that divert water from the unregulated sections of the rivers and streams and from the groundwater system.

As part of the Land and water use mapping project, assessment of these unregulated water users was undertaken to determine the amount of water used, what industry the water was used in and the number of Take and Use Licences within the catchment.

Future data collection will provide an opportunity to then analyse changes in these criteria and inform future decision making across the basin for both land use and water use as well as industry types. The industry types are consistent with the Regulated Diversion project and the GMID project.

FIGURE 1: CAMPASPE RIVER BASIN



**INDUSTRY TYPES:**

-   
Cropping
-   
Dairy (Combined)
-   
Energy
-   
Glasshouse Plant / Vegetable
-   
Horses
-   
Horticulture Annual
-   
Horticulture Perennial
-   
Intensive Animals
-   
Livestock Non Dairy
-   
Rural Lifestyle/ Residential
-   
Other
-   
Not Irrigated

# Campaspe River Basin Results 2023/24

The results of the inaugural data collection provides an excellent basis to build on into the future. For the Campaspe River basin, there were 427 Take and Use Licences covering 30,166ha. Just over 18.5 gigalitres (GL) of water was used, with the concentration of use in the north of the catchment and from the groundwater system. Further details are provided in Table 1.

**TABLE 1: SUMMARY OF AREA, WATER USE AND TAKE AND USE LICENCES**

CAMPASPE RIVER BASIN LAND USE	AREA (ha)	WATER USAGE (ML)	TAKE AND USE LICENCES
Cropping	13,203	8,947	83
Dairy (Combined)	5,020	5,820	45
Energy	—	—	—
Glasshouse Plant/Vegetable Production	51	8	4
Horses	—	—	—
Horticulture – Annual	265	12	4
Horticulture – Perennial	2,015	232	58
Intensive Animals	308	26	5
Livestock – Non Dairy	4,738	2,394	77
Rural Lifestyle/Residential	1,809	240	106
Other	2,724	858	43
Not irrigated	34	3	2
<b>TOTAL</b>	<b>30,166</b>	<b>18,540</b>	<b>427</b>

Please note: Licence area represents the parcels of land/title to which the licenced is attached and not the irrigation footprint.

## Area (ha)

The total area with a Take and Use Licence for the Unregulated diversions and Groundwater users in the Campaspe River basin was 30,166 ha, with Cropping representing the largest area at 13,203 ha (44% of the Take and Use Licence area). Dairy (Combined) and Livestock – Non Dairy were similar in 5,020 ha and 4,738 ha respectively. The total licence area represents the parcels of land/title to which the licenced is attached and not the irrigation footprint.

## Water Use (ML)

The total water use for the Unregulated diversions and groundwater users in the Campaspe River basin was just over 18.5 GL, with Cropping and Dairy (Combined) enterprises using most of the water at 14.7 GL, representing 80% of the total water used.

## Take and Use Licences

The total number of Take and Use Licences for Unregulated diversions and Groundwater users was 427. Rural Lifestyle/ Residential and Cropping enterprises held the highest number of licences at 106 and 83 respectively, representing 44% of Take and Use Licence holders.